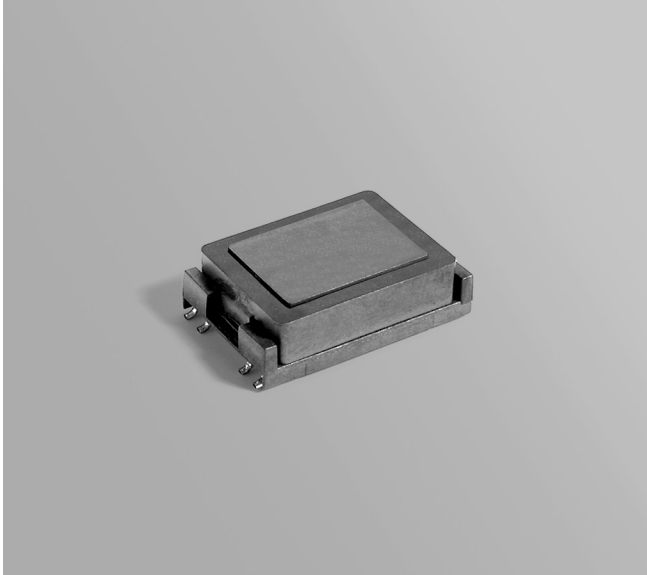




# CCFL Transformer

For Texas Instruments  
TPS68000 CCFL Controller



The FA2786-BL was developed specifically for the Texas Instruments TPS68000 Phase Shift Full Bridge CCFL Controller. It is designed for use in cold cathode fluorescent lamp power supplies operating at frequencies up to 100 kHz.

This transformer is specified in the Texas Instruments TPS68000EVM-202 dual-transformer reference design. This reference design shows a single TPS68000 driving two FA2786-BL transformers and CCFL lamps. Isolation is 500 Vrms between windings and 2000 Vrms from each winding to the core.

Free evaluation samples are available by contacting Coilcraft or ordering them on-line at [www.coilcraft.com](http://www.coilcraft.com).

**Weight** 6.0 g

**Terminations** Tin-silver (96.5/3.5) over tin over nickel over phos-bronze

**Packaging** 400/13" reel Plastic tape: 44 mm wide, 0.37 mm thick, 20 mm pocket spacing, 7.8 mm pocket depth

**PCB washing** Tested with pure water or alcohol only. For other solvents, see Doc787\_PCB\_Washing.pdf.

Part number <sup>1</sup>	Turns ratio pri : sec	Output (Watts)	Inductance <sup>2</sup> min (µH)	Vin (Volts)	Imax sec (mA)	Vrms <sup>3</sup> sec (Volts)	Vinst max <sup>4</sup> sec (Volts)	DCR max (Ohms)	
								pri	sec
FA2786-BL_	1:100	6.0	160	8 – 20	7.0	1600	2000	0.621	937.3

1. When ordering, please specify a **packaging** code:

**FA2786-BLD**

**Packaging:** **D** = 13" machine ready reel. EIA-481 embossed plastic tape (400 parts per full reel). Quantities less than full reel available: in tape (not machine ready) or with leader and trailer (\$25 charge).

**B** = Less than full reel. In an effort to simplify our part numbering system, Coilcraft is eliminating the need for multiple packaging codes. When ordering, simply change the last letter of your part number from B to D.

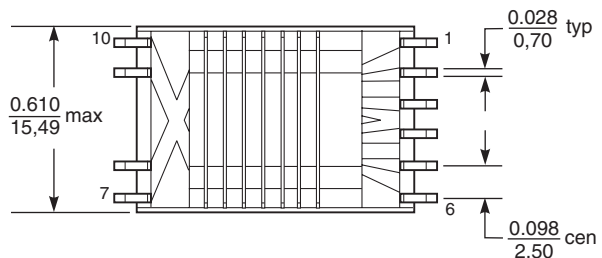
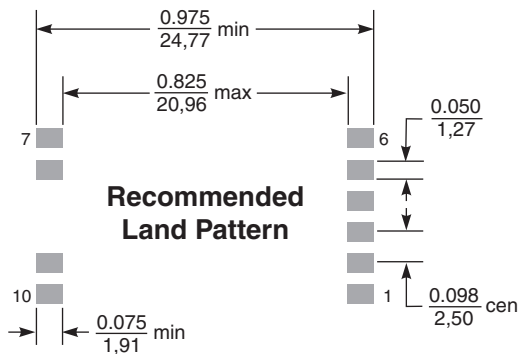
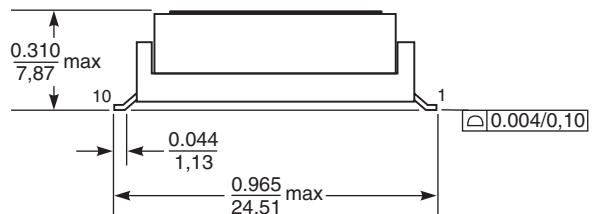
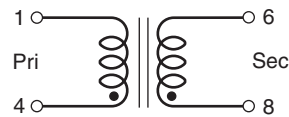
2. Inductance measured at 1 Vrms, 60 kHz, 0 Adc.

3. Vrms=continuous voltage.

4. Vinst = instantaneous voltage at startup.

5. Ambient operating temperature range -40°C to +85°C.

6. Electrical specifications at 25°C.



**US** +1-847-639-6400 sales@coilcraft.com  
**UK** +44-1236-730595 sales@coilcraft-europe.com  
**Taiwan** +886-2-2264 3646 sales@coilcraft.com.tw  
**China** +86-21-6218 8074 sales@coilcraft.com.cn  
**Singapore** + 65-6484 8412 sales@coilcraft.com.sg

Document 575 Revised 01/18/07

© Coilcraft Inc. 2021

This product may not be used in medical or high risk applications without prior Coilcraft approval. Specification subject to change without notice. Please check web site for latest information.